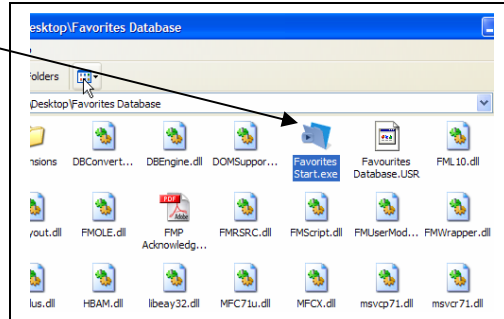


Favorites Database – How To Use this Activity

Click on the Download link. The database will download and an installation window will appear. Ensure that you check to see where the program is going to be saved (it should automatically be set to save on your Desktop) and click the **“Install”** button.

A folder called **“Favorites Database”** will be installed on your desktop if you haven’t changed the settings. Open the folder and double-click on the **“Favorites Start.exe”** icon.



(Please email kmurphy@inlets.net if your intranet will not allow you to download an “exe” file.)

This will start your Favorites database file. It is the one you will always use to enter tree data. Always start the database by clicking on this icon.

Once you click on the Tree Taxonomy Start icon, the program may take a while to load. A login window may appear. Click **“Guest Account”** and click OK (no password is required). You should be brought to the start page for the Favorites database...



Follow the instructions given in the program for entering pictures and text.

**All information is automatically saved.
DO NOT TRY TO USE “SAVE A COPY AS”.**